

Tapestry: Weaving the Century at Dovecot Studios 1912 - 2012

Saturday 20 October – Sunday 16 December 2012

Tapestry is an extraordinary and special art which brings together two worlds to make a new one.
Dr Elizabeth Cumming

At its best, an artist and weavers create a unique work of art in which skill, texture, colour, form and space together spark magic. The iconic and rarely seen works within this exhibition by Alan Davie, David Hockney, Paul Gauguin, Elizabeth Blackadder, Peter Blake, Edward Wadsworth, Cecil Beaton, Graham Sutherland, Eduardo Paolozzi, and Jankel Adler, amongst others, are testimony to this unique fusion.

A weave is as individual as the weaver who interprets a design. Dr Elizabeth Cumming

Over the last century, Edinburgh based Dovecot Studios have produced more than 700 tapestries and rugs, ranging from the more traditional, finely-woven hangings to experimental textile art. This exhibition, curated by Dr Elizabeth Cumming, presents over 60 of these tapestries and rugs on loan from major museums and private collections in America and Britain. Each one, created at Dovecot during the twentieth and early twenty-first century, represents the broad range of visual and technical weaving styles that has established Dovecot's reputation as a centre for excellence and innovation.

This is the first time that such a vast collection of works produced by Dovecot has been shown together. Whilst revealing the history of Dovecot, it also offers the opportunity to explore the rich artistic potential of modern tapestry. Visitors will see how Arts and Crafts ideals, synonymous with the fine weaving of Scottish historical and pastoral designs of William Skeoch Cumming and Alfred Priest, evolved into an engagement with modern, Neo-Romantic art from the 1950s onwards, when designs came from leading artists including Graham Sutherland, Paul Gauguin, Jankel Adler, Edward Wadsworth and John Piper. A quest for experimentation dominated the 1960s and 1970s when Dovecot worked with a range of artists including Eduardo Paolozzi, David Hockney and Elizabeth Blackadder. Since then there have been Dovecot collaborations with John Bellany, Barbara Rae, Kate Whiteford and, more recently, with William Crozier and Liz Rideal.

The exhibition also has an interactive element: the Stratford upon Avon Guild of Weavers Spinners and Dyers will be setting up a studio within the exhibition space, demonstrating weaving techniques as well as running hands-on workshops for visitors.

The exhibition is accompanied by a major full-colour publication, *The Art of Modern Tapestry: Dovecot Studios since 1912*, edited by Dr Elizabeth Cumming, published by Lund Humphries in association with Dovecot Studios and priced £40.00.

A Dovecot touring exhibition curated by Dr Elizabeth Cumming.

Exhibition related events and activities

From Saturday 27 October, 2pm

Daily exhibition tours

A 45-minute tour of the exhibition

Included in exhibition, collections and grounds ticket. Please sign up on arrival.

Every Tuesday, Thursday and Sunday

Exhibition resource room

Find out more about the exhibition and try your hand at weaving on the loom with the Stratford-upon-Avon Guild of Weavers, Spinner and Dyers.

Included in exhibition, collections and grounds ticket.

Friday 2 November, 1pm

Understanding Art: Arts and Crafts to Avant-garde: Dovecot Studios 1912-2012

Dr Elizabeth Cumming, curator of *Tapestry: Weaving the Century at Dovecot Studios 1912-2012*

exhibition explores the variety of artists who have designed for Dovecot and their relations with the Studios.

Included in collections and grounds admission.

Saturday 10 November

Textile Fair

Visit our textile fair in the Adam Hall to browse and buy: works by local artists, specialist textiles, vintage clothing and unique Christmas gifts.

Included in collections and grounds admission.

Saturday 1, Sunday 2 December, Saturday 8 and Sunday 9 December

Saturday 15 and Sunday 16 December

Winter weekends

Fun, festive and creative activities with the Stratford upon Avon Guild of Weavers, Spinners and Dyers. You can weave a star decoration, do some card weaving and make a Christmas character (like Rudolf, elves or Santa) on a simple stick loom.

Festive storytelling for the under 5s in an adventure with Compton Verney characters Connie and Verne.

Festive music - On the 1, 2, 15 and 16 December the Cantamus choir sing madrigals and early English carols. On the 8 and 9 December Award winning Folk Band Colvinquarmby (Gerry Colvin and Nick Quarmby) sing and play winter Folk songs and specially written works inspired

by Compton Verney's British Folk Art Collection.

Included in collections and grounds admission

Notes to editors

- Compton Verney is open until, Tuesday – Sunday, 11 am – 5 pm
- Admission to Compton Verney including the exhibition is £12.00 Adults, £10.00 Concessions, £2.00 Children, £24.00 Family. Under 5s are free. Admission includes entry to the collections, grounds and the exhibition.
- For tickets and information see www.comptonverney.org.uk or call 01926 645500
- Daily 45 minute exhibition tours take place at 12 noon and are included in admission. No advance booking sign up on arrival.
- The gallery is home to six permanent collections and a changing exhibition programme.

Image information

Exhibition

Tapestry: Weaving the Century at Dovecot Studios 1912 - 2012

Saturday 20 October - Sunday 16 December 2012

For high resolution copies of any of the following images, please email:
press@comptonverney.org.uk

- All credit lines are correct in accordance to agreements with lending institutions and copyright holders and must be used in full.
- All images are supplied at 300 dpi, approx. 3-4 MB and approx. 10/11 cm in height or width. Please contact us if you require a larger image.
- In agreement with copyright holders all images may not be cropped or text laid over them without prior permission.



Alfred Priest
The Admirable Crichton (1927–30)
Wool
Weavers: David Lindsay Anderson,
Ronald Cruickshank, Stanley
Ebbutt, John Louttit
The Bute Collection at Mount
Stuart



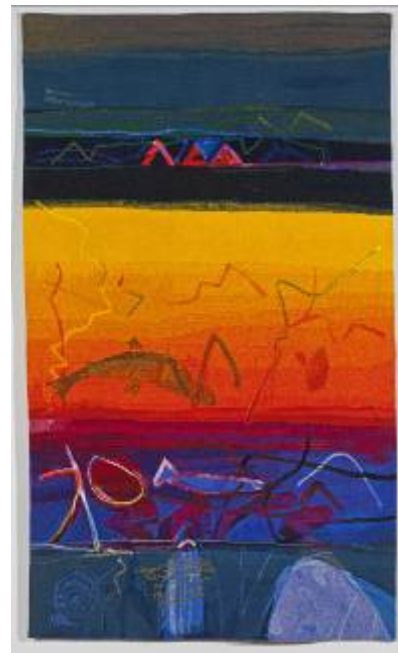
Peter Blake
Based on the '*I love*' series. On the
loom. To be completed July 2012.
Wool cotton warp
Weaver: Naomi Robertson



Elizabeth Blackadder
Eastern still life (1980)
Cotton warp, wool
Weavers: Jean Taylor, Annie
Wright, Johnny Wright



Archie Brennan
At a Window VII (aka the spotted dress) (1980)
Cotton warp, wool
Weavers: Douglas Grierson, Jean Taylor,
Annie Wright, Harry Wright, Johnny Wright
Victoria and Albert Museum, London



Barbara Rae
Fishpoo, Lacken (2010)
Cotton warp, wool
Weavers: David Cochrane, Douglas Grierson,
Naomi Robertson
Dovecot Studios. Photograph by Antonia Reeve



Edward Bawden
Farming (1950)
Wool
Weavers: Archie Brennan, Ronald Cruickshank,
Alex Jack, Fred Mann
Victoria and Albert Museum, London



After Paul Gauguin
La Orana Maria (1946)
Wool
Weavers: Ronald Cruickshank and John Louttit
National Museums of Scotland



Sir Eduardo Paolozzi
Detail: Whitworth Tapestry (1967-8)
Cotton warp, wool
Weavers: Archie Brennan, Douglas Grierson,
Fred Mann, Harry Wright
Whitworth Art Gallery, University of Manchester



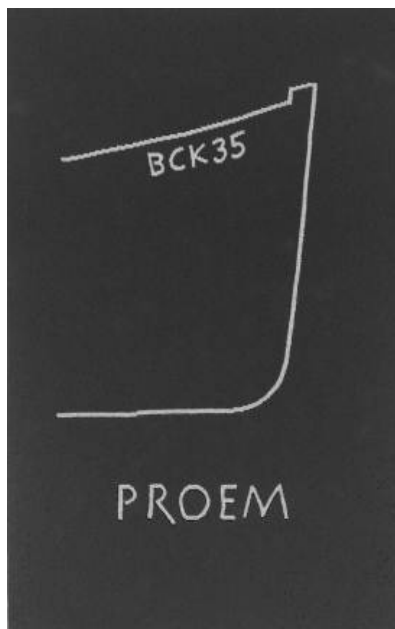
Alan Davie
Cosmic Spiral (2003)
Dovecot Studios



Cecil Beaton
Chair seat Tulip (1948)
Wool
Weaver: Ronald Cruickshank
National Museums of Scotland



David Hockney
A Tapestry made from a Painting, made from a Painting of a Tapestry, made from a Painting (Play within a Play, 1st edition) (1969)
Weavers: Douglas Grierson, Maureen Hodge, Fred Mann and Harry Wright
Cotton warp, wool
© David Hockney. Photo by Richard Schmidt



Ian Hamilton Finlay
BCK Proem (1998)
Cotton warp, wool
Weavers: David Cochrane, Douglas Grierson
Estate of Ian Hamilton Finlay